

| | | |
|---------------|---|-------------------------------------|
| Title: | Deliverable D3.3.18 Network Usage (M18, June 2003) | Document Version: 1.2 |
|---------------|---|-------------------------------------|

| | | |
|--|------------------------------------|--|
| Project Number: IST-2001-32181 | Project Acronym: Euro6IX | Project Title: European IPv6 Internet Exchanges Backbone |
|--|------------------------------------|--|

| | | |
|---|--|--|
| Contractual Delivery Date: 20/07/2003 | Actual Delivery Date: 31/08/2003 | Deliverable Type* - Security**: R – PU |
|---|--|--|

* Type: P - Prototype, R - Report, D - Demonstrator, O - Other

** Security Class: PU- Public, PP – Restricted to other programme participants (including the Commission), RE – Restricted to a group defined by the consortium (including the Commission), CO – Confidential, only for members of the consortium (including the Commission)

| | | |
|--|-----------------------------|--------------------------------|
| Responsible and Editor/Author: Carlos Ralli Ucendo | Organization: TID | Contributing WP: WP3 |
|--|-----------------------------|--------------------------------|

| |
|---|
| Authors (organizations): Jordi Palet (Consulintel), Alvaro Vives (Consulintel), Aurora Ferrándiz (TID), Jesús López (TID), Antonio Lucientes (TID). |
|---|

| |
|---|
| Abstract: Deliverable D3.3.18 is produced when almost Euro6IX network infrastructure is up and running and services are maintained in a stable way. Last month a list of these services has been published. From now to the end of the project, this list will be updated. The main goal of these documents is to report Euro6IX networks status, deployment stage and usage by internal activities as well as public events. |
|---|

| |
|--|
| Keywords: Euro6IX, IPv6, Network Maps, Network Reports, Network Status, Statistics, Services, Traffic. |
|--|

Revision History

The following table describes the main changes done in the document since its creation.

| Revision | Date | Description | Author (Organization) |
|----------|------------|--|---|
| v0.1 | 04/08/2003 | Document creation and Addition of Stat6 graphics | Jesús López (TID) Aurora Ferrándiz (TID) |
| v1.0 | 05/08/2003 | Addition of Stable Services List, Euro6IX Web Access Statistics and Comments on GIS 2003 event | Aurora Ferrándiz (TID) |
| v1.1 | 06/08/2003 | Comments on MRTG Statistics | Antonio Lucientes (TID) |
| v1.2 | 31/08/2003 | Final review | Jordi Palet (Consulintel) |

Executive Summary

D3.3.18 deliverable has been produced in the context of activities A3.1 and A3.2.

Activity A3.1 covers the deployment of the local networks attached to the different Euro6IX IXs nodes. Activity A3.2 deals with all deployments related to Euro6IX Backbone network.

Deliverables D3.3.x are being produced every month, and this document corresponds to month number 18 (June 2003).

As a first approach, the structure of these network usage reports is the following:

- First section (Current Network Status) is intended to clarify which links have been already deployed and which concrete networks have been attached.
- Second section (Network Stability and Global Traffic Reports) is intended to show the reachability of all network sections as well as a global view of the total traffic exchanged in Euro6IX network.
- Third section (Detailed Network and Services Usage in Events/Trials) is intended to show and analyze the traffic produced in some internal trials and in all public events where Euro6IX contributes in any way.

Table of Contents

| | |
|---|-----------|
| 1. Introduction..... | 6 |
| 2. Current Network Status..... | 7 |
| 2.1 Remarkable News Related to Euro6IX Network & Services..... | 7 |
| 2.2 Status of International Links | 7 |
| 3. Network Stability and Global Traffic Reports..... | 8 |
| 3.1 Hosts/Networks Reachability Statistics from TID | 8 |
| 3.2 Links Traffic Measurement Statistics | 11 |
| 3.3 Euro6IX Servers List and Stability Statistics | 11 |
| 3.4 Euro6IX Web Server Statistics..... | 17 |
| 4. Detailed Network and Services Usage in Events/Trials..... | 19 |
| 5. Summary and Conclusions | 20 |

Table of Figures

| | | |
|--------------------|--|------------------|
| Figure 2-1: | <i>Planned Euro6IX International Links as of June 2003</i> | <i>7</i> |
| Figure 3-1: | <i>Euro6IX IXs LOSS Measured from TID Premises in June 2003</i> | <i>9</i> |
| Figure 3-2: | <i>Euro6IX IXs DELAY Measured from TID Premises in June 2003.....</i> | <i>10</i> |
| Figure 3-3: | <i>Monthly Graph, IPv6 Traffic, TID to Euro6IX (June 2003)</i> | <i>11</i> |
| Figure 3-4: | <i>Web Usage Summary this Month and Last 12 Months</i> | <i>17</i> |
| Figure 3-5: | <i>Monthly Statistics for June 2003.....</i> | <i>17</i> |
| Figure 3-6: | <i>Web Daily Usage for June 2003.....</i> | <i>18</i> |
| Figure 3-7: | <i>Web Hourly Usage for June 2003.....</i> | <i>18</i> |

1. INTRODUCTION

Euro6IX network monthly reports are intended to show network and services evolution, current status, stability and usage.

Since D3.3.15 (March 2003 Network Monthly Report), an updated list of stable services per partner will be included in this document.

Only stable and operational services are listed, since there are other lists for specific trials/tests within A4.1, A4.2 & A4.3 including also unstable services.

2. CURRENT NETWORK STATUS

This section is intended to update and clarify which links have been already deployed and which concrete networks have been attached to Euro6IX backbone.

2.1 Remarkable News Related to Euro6IX Network & Services

In this period (June 2003, M18) the relevant news include:

- **TOR6IX-ZUR6IX:** Same as in March 2003: Physical connection Up & Running thanks to a link provided by Swisscom/Fixnet. It stills need some configuration to be IPv6 reachable.
- **LIS6IX and TOR6IX** have implemented and configured the Routing policy agreed in WP2. This policy is necessary to keep Euro6IX traffic within Euro6IX links and establish useful peerings with external networks (such as 6NET, ABILENE, etc).

2.2 Status of International Links

The updated status of the links is as follows:

- **LIS6IX-MAD6IX:** Up and running.
- **MAD6IX-LON6IX:** Up and running.
- **LON6IX-PAR6IX:** Up and running.
- **PAR6IX-BER6IX:** Up and running.
- **BER6IX-TOR6IX:** Up and running.
- **TOR6IX-ZUR6IX:** Up and running.
- **TOR6IX-MAD6IX:** It was decided to use a tunnel to enable routing tests depending on a ring topology. Not configured yet.

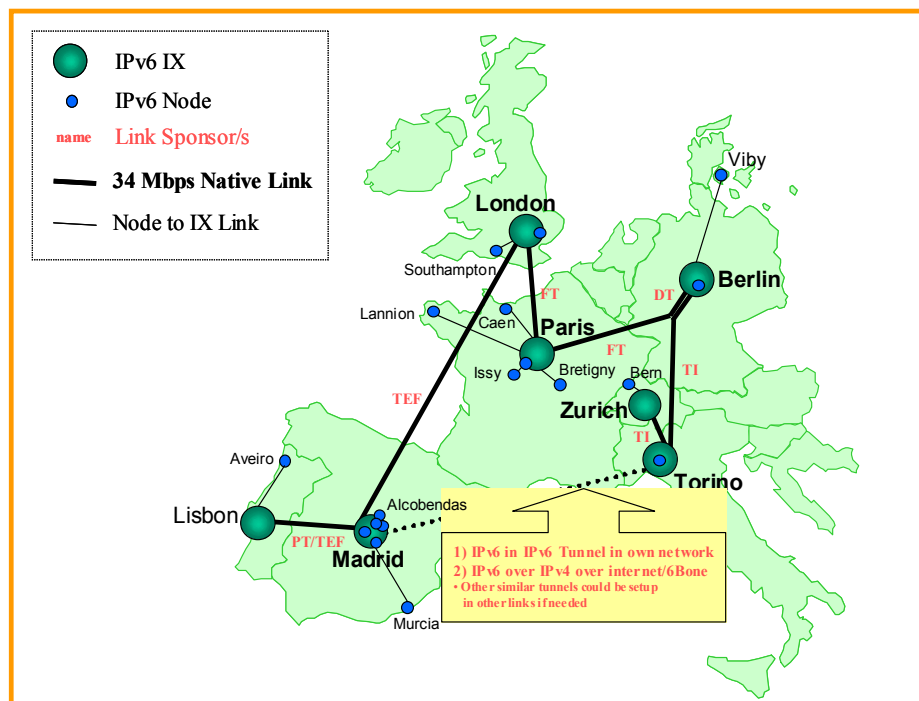


Figure 2-1: Planned Euro6IX International Links as of June 2003

3. NETWORK STABILITY AND GLOBAL TRAFFIC REPORTS

The following subsections show the global statistics systems that have been identified as necessary to characterize the Euro6IX network stability and usage each month.

3.1 Hosts/Networks Reachability Statistics from TID

The “ping_stat” tool, or simply “stat6”, automatically generates these statistics from TID premises (<http://stat6.tid.euro6ix.org/>). This system allows through the WEB interface to display any day or month graphic on demand.

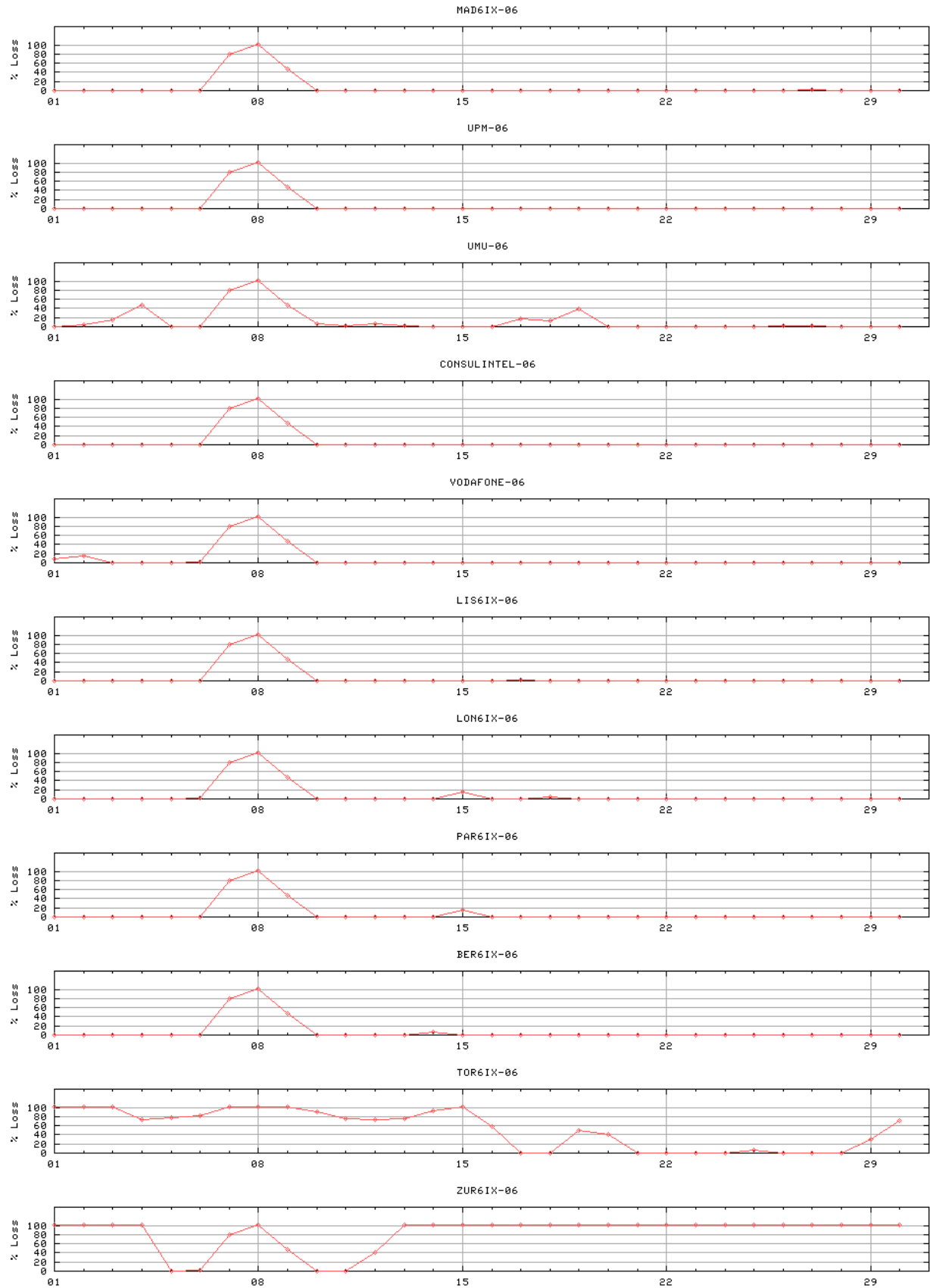


Figure 3-1: Euro6IX IXs LOSS Measured from TID Premises in June 2003

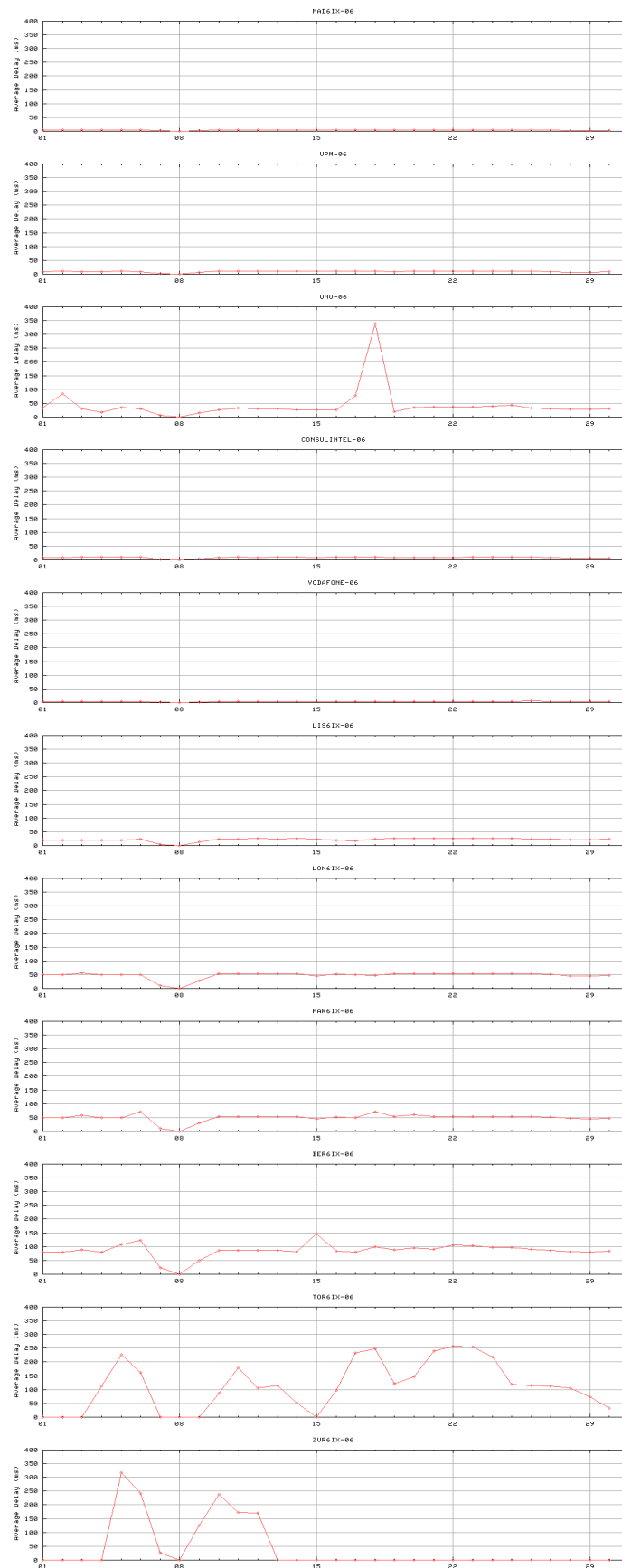


Figure 3-2: Euro6IX IXs DELAY Measured from TID Premises in June 2003

3.2 Links Traffic Measurement Statistics

Until today, only an IPv4 MRTG tool has been installed in TID premises. When nGn porting of MRTG to IPv6 is ready more partners will install it obtaining useful link traffic statistics.

Although MRTG IPv4 is used at TID, it measures only IPv6 traffic since it is configured to show all ATM interface throughputs and there is no IPv4 traffic on those ATM PVCs.

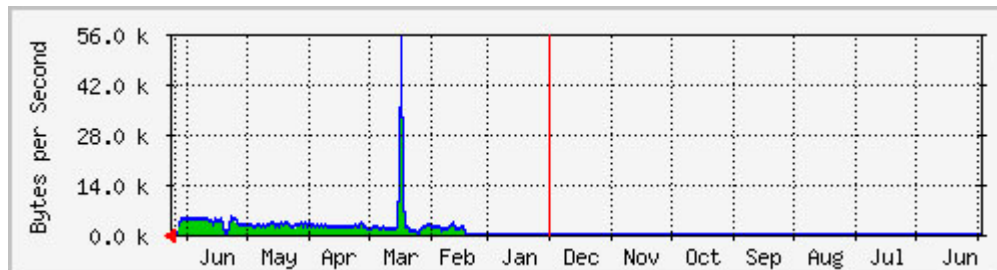


Figure 3-3: Monthly Graph, IPv6 Traffic, TID to Euro6IX (June 2003)

As seen in the graphics above, there is about 5 Kbytes/s traffic from TID to Euro6IX and vice-versa (symmetric. Blue = TID to Euro6IX, Green = Euro6IX to TID) due to some M6Bone and Magalia tests. There is a little bit more traffic due to the increment of internal test users at TID and external ADSL tunneled users connected to TID. In the middle of June it can be seen that connectivity from TID was lost for weekend due to a physical problem.

3.3 Euro6IX Servers List and Stability Statistics

This section is an updated list (end of June 2003) of the stable services running in Euro6IX network.

6WIND

| Server | URL IPv6 | URL IPv4 | Recommended Client |
|-----------|---|---|--------------------|
| Web | www.6wind.euro6ix.org | | IPv6 Web Browser |
| Webmail | https://Proxy.ipv6.6wind.com | https://Proxy.6wind.com | |
| Web proxy | www.6wind.euro6ix.org | Proxy.6wind.com | |

BT

| Server | URL IPv6 | URL IPv4 | Recommended Client |
|---------------------|--|---|--------------------|
| Web | http://www.uk6x.com/ | http://www.uk6x.com/ | IPv6 Web Browser |
| Looking Glass | https://lg.ipv6.btexact.com/ | https://lg.ipv6.btexact.com/ | IPv6 Web Browser |
| Nagios | http://www.uk6x.com/nagios/ | http://www.uk6x.com/nagios/ | IPv6 Web Browser |
| Quake 1 and Quake 2 | quake1.ipv6.btexact.com quake2.ipv6.btexact.com | V4 access via Ultima | Quake |

| Server | URL IPv6 | URL IPv4 | Recommended Client |
|-----------------|---|---|--|
| | quake.ipv6.btexact.com | | |
| Video Streaming | http://vod.ipv6.btexact.com | V4 access via Ultima | VLC |
| MP3 Streaming | http://radio.ipv6.btexact.com:8000/ | V4 access via Ultima | Winamp (http://www.uk6x.com/applicationservices/radio.m3u) Windows Media 9 (http://www.uk6x.com/applicationservices/radio.asx) mpeg123 for Unix Systems xmms for Unix and Linux Systems Freeamp, now called zinf is a multimedia player for Linux or Windows systems. It has been tested under Linux and Windows 2000/XP. VLC |
| Tunnel Broker | | https://tb.ipv6.btexact.com/ | |
| GPRS Access | http://www.uk6x.com/networkservices/gprs.html | | |
| 6to4 | | 6to4.ipv6.bt.com | |

Consulintel

| Server | URL IPv6 | URL IPv4 | Recommended Client |
|----------------------|---|---|--------------------|
| Web | www.consulintel.euro6ix.org (.com, .net) | www.consulintel.euro6ix.org (.com, .net) | IPv6 Web browser |
| Euro6IX Official Web | www.euro6ix.com www.euro6ix.org www.euro6ix.net | www.euro6ix.com www.euro6ix.org www.euro6ix.net | IPv6 Web Browser |
| Web Site Statistics | http://www.consulintel.euro6ix.net/_private_euro6ix/statistics/statistics.htm | http://www.consulintel.euro6ix.net/_private_euro6ix/statistics/statistics.htm | IPv6 Web Browser |
| Project Repository | ftp://ftp.euro6ix.org | ftp://ftp.euro6ix.org | IPv6 Web Browser |
| Web Mail Tool | http://webmail.novagnet.euro6ix.org/ | http://webmail.novagnet.euro6ix.org/ | IPv6 Web Browser |
| Video Streaming | mms://6stream.consulintel.euro6ix.com/ | | Windows Media 9 |
| DNSSec | https://pki.umu.euro6ix.org | | IPv6 Web Browser |
| Free Radius IPv6 | 6radius.consulintel.euro6ix.org | | |

FTRD

| Server | URL IPv6 | URL IPv4 | Recommended Client |
|-----------|--|----------|--------------------|
| Webcam | webcam.ftrd.euro6ix.org | | |
| Proxy Web | proxy.ftrd.euro6ix.org | | |
| Quake2 | quake2.ftrd.euro6ix.org | | Quake |
| Teg | teg.ftrd.euro6ix.org (not running yet) | | |

nGn

| Server | URL IPv6 | URL IPv4 | Recommended Client |
|--------------------|---|----------|--------------------|
| Web | www.novagnet.euro6ix.org | | IPv6 Web Browser |
| Project Repository | ftp://ftp.euro6ix.org | | IPv6 Web Browser |
| Web Mail Tool | http://webmail.novagnet.euro6ix.org/ | | IPv6 Web Browser |

PTIN

| Server | URL IPv6 | URL IPv4 | Recommended Client |
|--------------------|--|----------|---|
| Web | www.ptin.euro6ix.[com/org/net] www6.ptin.euro6ix.[com/org/net] | - | IPv6 Web Browser (IE, Netscape, Mozilla) |
| Chat/IRC | irc.ptin.euro6ix.[com/org/net] irc6.ptin.euro6ix.[com/org/net] | - | IPv6 Chat Client (kvirc an xchat) |
| Jabber | jabber.ptin.euro6ix.[com/org/net] | - | Gabber |
| Quake 1 and Quake2 | quake.ptin.euro6ix.[com/org/net] | - | Quake I and Quake II |
| MP3 Streaming | mp3server.ptin.euro6ix.[com/org/net] | - | FreeAMP |
| Audio Streaming | rat.ptin.euro6ix.[com/org/net] | - | Rat |
| Video Streaming | vic.ptin.euro6ix.[com/org/net] | - | Vic |
| 6to4 router relay | 6to4.ptinovacao.pt 6to4.ptin.euro6ix.[com/org/net] | - | - |
| Multicast (Router) | multicast.ptin.euro6ix.[com/org/net] | - | - |
| DNS (Router) | ipv6-dns.ptinovacao.pt dns.ptin.euro6ix.[com/org/net] | - | - |
| Mobility (HA) | ha.ptin.euro6ix.[com/org/net] ha-in.ptin.euro6ix.[com/org/net] ha-out.ptin.euro6ix.[com/org/net] | - | Linux MN (draft15). no Sas (Security Associations) |
| Isabel | isabel.ptin.euro6ix.[com/org/net] | - | |

T-Nova

| Server | URL IPv6 | URL IPv4 | Recommended Client |
|--------|--|------------------------|--------------------|
| Web | www.t-nova.euro6ix.org | www.t-nova.euro6ix.org | IPv6 Web Browser |

| Server | URL IPv6 | URL IPv4 | Recommended Client |
|--------------------------------|--|----------|--------------------|
| Looking Glass/ Route Server | Accessible through Web Service | | |
| TILAB AS-Path Tree | Accessible through Web Service | | |
| MRTG | Accessible through Web Service | | |
| Chat/IRC | irc.t-nova.euro6ix.org | | IPv6 Chat Client |
| NTP | ntp.t-nova.euro6ix.org | | NTP Client/ntpdate |
| Video Streaming | video.t-nova.euro6ix.org | | Windows Media 9 |
| Tunnel Broker | http://tb.ipv6.berkom.de | | Web Browser |

Telcom

| Server | URL IPv6 | URL IPv4 | Recommended Client |
|-------------------------|---|----------|---------------------------------------|
| Web | http://www.telcom.ch | | |
| MMS Video Streaming | http://dnsv6.telcom.ch:8100/mediaplayer6.html | | WindowsMedia |
| RTSP video streaming | rtsp://dss6.ipv6.telcom.ch | | mp4player (MPEG4IP) |
| 6Voice | http://www.telcom.ch/6voice/index.htm | | |
| DNS | dnsv6.ipv6.telcom.ch | | |
| Home Environment | http://napoli.ipv6.telcom.ch/TelcomHomeEnvironment | | |

TID

| Server | URL IPv6 | URL IPv4 | Recommended Client |
|---------------------------------------|---|----------|--------------------|
| Web | www.tid.euro6ix.com | | IPv6 Web Browser |
| Web Usage Statistics | www.tid.euro6ix.com/usage | | IPv6 Web Browser |
| Magalia | Running at: mortadelo.tid.euro6ix.com:4444 | | Xges |
| Looking Glass | http://lg.tid.euro6ix.com | | IPv6 Web Browser |
| MRTG | http://mrtg.tid.euro6ix.org/mrtg/ | | IPv6 Web Browser |
| MRTG for TID DNS | http://mrtg.tid.euro6ix.org/mrtg_dns/dns1.i-st-long.com.html | | IPv6 Web Browser |
| Web Statistics Tool | http://stat6.tid.euro6ix.com | | IPv6 Web Browser |
| Chat/IRC | irc.tid.euro6ix.com | | Chat IPv6 Client |
| Video Streaming | vod.tid.euro6ix.com:9999 | | VLC |
| Free Radius IPv6 | Running at: mortadelo.tid.euro6ix.com:4444 | | |
| Digital TV Multicast | dtv.tid.euro6ix.com:1234 | | |
| Access to a Digital Home through a | http://hogardigital6.tid.euro6ix.com | | IPv6 Web Browser |

| Server | URL IPv6 | URL IPv4 | Recommended Client |
|---|---|---|--------------------|
| NAT-PT | | | |
| Access to a Multimedia IPv4 Portal through a NAT-PT | http://cba.tid.es | http://cba.tid.es | IPv6 Web Browser |

TILAB

| Server | URL IPv6 | URL IPv4 | Recommended Client |
|---------------------|---|----------|---|
| Web | http://www.ngnet.it | | |
| Web Statistics Tool | Running at TILAB's IPv6 laboratory | | IPv6 Web Browser |
| TILAB AS-Path Tree | Running at TILAB's IPv6 laboratory | | |
| Chat/IRC | irc6.ngnet.it | | IPv6 Chat Client |
| News | news6.ngnet.it | | IPv6 News Client |
| Mail for IPv6 Users | http://mail.ngnet.it/e/ | | IPv6 Web Browser (mail server available from Web) |
| Jabber | jabber.ngnet.it | | |
| Quake 1 and Quake 2 | games.ngnet.it | | Quake |
| Tunnel Broker | http://tb.ngnet.it/ | | |

UMU

| Server | URL IPv6 | URL IPv4 | Recommended Client |
|----------------------|--|----------|--------------------|
| Web | www.umu.euro6ix.org | | IPv6 Web Browser |
| Looking Glass | http://www.umu.euro6ix.org/cgi-bin/router-wan/ntools.pl http://www.umu.euro6ix.org/cgi-bin/router-lan/ntools.pl | | IPv6 Web Browser |
| Nagios | http://nagios.umu.euro6ix.org/nagios/ | | IPv6 Web Browser |
| Chat/IRC | http://www.uc3m.ist-long.com/irc/ | | IPv6 Chat Client |
| VPN Enforcement Tool | https://shire.umu.euro6ix.org | | IPv6 Web Browser |
| PKIv6 | https://pki.umu.euro6ix.org | | IPv6 Web Browser |
| DNSSec | https://pki.umu.euro6ix.org | | IPv6 Web Browser |
| PMTv6 | https://shire.umu.euro6ix.org/pmttool | | |

UoS

| Server | URL IPv6 | URL IPv4 | Recommended Client |
|-------------|---|----------|--------------------|
| Surge Radio | http://surge.ecs.soton.ac.uk:8090 | | |

UPM

| Server | URL IPv6 | URL IPv4 | Recommended Client |
|---------------|---|---|-------------------------------|
| Web | http://www.upm.euro6ix.org | http://wamba.dit.upm.es | |
| FTP | ftp://ftp.upm.euro6ix.org | ftp://wamba.dit.upm.es | |
| Magalia | magalia.upm.euro6ix.org | nevada.saba.rediris.es | |
| Free Radius | radius.upm.euro6ix.org | nevada.saba.rediris.es | |
| Looking Glass | http://www.upm.euro6ix.org/cgi-bin/looking-glass-upm-v0.6/ntools.pl | http://wamba.dit.upm.es/cgi-bin/looking-glass-upm-v0.6/ntools.pl | IPv6 Web Browser |
| Nagios | nagios.upm.euro6ix.org | nevada.saba.rediris.es | IPv6 Web Browser |
| Chat/IRC | irc.upm.euro6ix.org:7000 | viena.saba.rediris.es:7000 | IPv6 Chat Client (i.e. xchat) |
| Quake 2 | quake2.upm.euro6ix.org | wamba.dit.upm.es | |
| Teg | teg.upm.euro6ix.org | wamba.dit.upm.es | |
| Tetrisnet | tetris.upm.euro6ix.org | wamba.dit.upm.es | |
| mangbad | mangbad.upm.euro6ix.org | wamba.dit.upm.es | |
| Mail | mail.upm.euro6ix.org | viena.saba.rediris.es | |
| WebCam | http://idefix.upm.euro6ix.org/webcam.html | http://idefix.saba.rediris.es/webcam.html | |
| m6bone | m6bone.upm.euro6ix.org | | |
| DNSSec | https://pki.umu.euro6ix.org | | |

Vodafone

| Server | URL IPv6 | URL IPv4 | Recommended Client |
|--------|--|----------|--------------------|
| Web | www.vodafone.euro6ix.org | | IPv6 Web Browser |

TID Euro6IX Statistics Service (“Stat6”) will show in the future the availability of some relevant or public Euro6IX IPv6 servers listed above (to be included also in <http://stat6.tid.euro6ix.org>).

3.4 Euro6IX Web Server Statistics

This section contains the statistics related to IPv6 accesses to Euro6IX official WEB page, that are already being logged in advance to the start of the project, so it can be processed and displayed at any time.

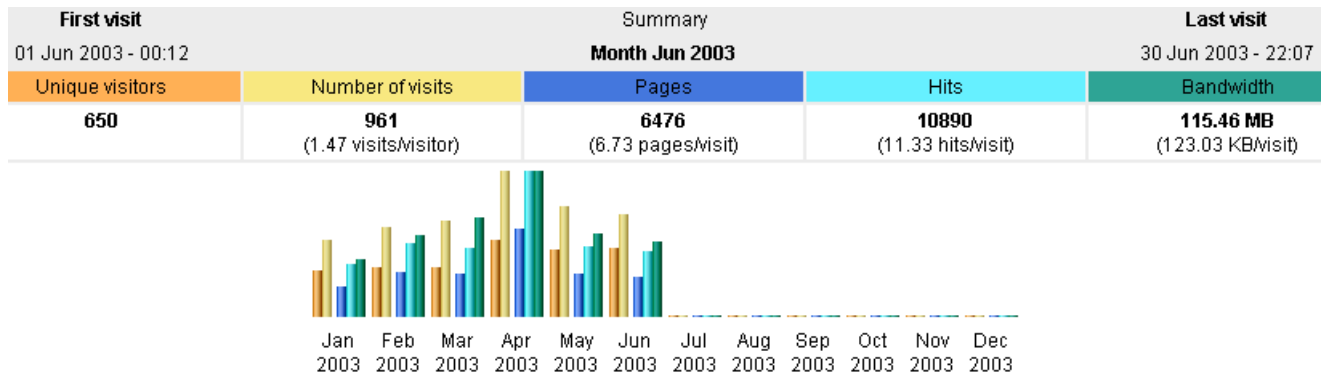


Figure 3-4: Web Usage Summary this Month and Last 12 Months

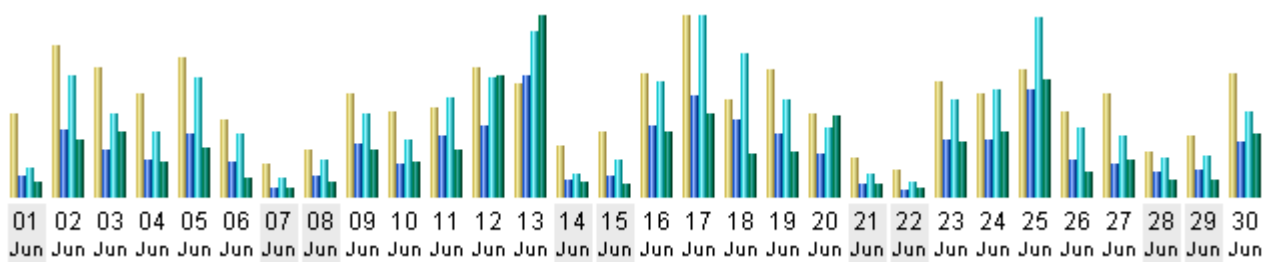


Figure 3-5: Monthly Statistics for June 2003

| Day | Number of visits | Pages | Hits | Bandwidth |
|-------------|------------------|--------|--------|-----------|
| 01 Jun 2003 | 28 | 93 | 129 | 1.22 MB |
| 02 Jun 2003 | 51 | 298 | 541 | 4.45 MB |
| 03 Jun 2003 | 44 | 209 | 369 | 5.09 MB |
| 04 Jun 2003 | 35 | 161 | 286 | 2.74 MB |
| 05 Jun 2003 | 47 | 281 | 531 | 3.85 MB |
| 06 Jun 2003 | 26 | 158 | 283 | 1.44 MB |
| 07 Jun 2003 | 11 | 40 | 83 | 681.44 KB |
| 08 Jun 2003 | 16 | 98 | 166 | 1.25 MB |
| 09 Jun 2003 | 35 | 238 | 374 | 3.79 MB |
| 10 Jun 2003 | 29 | 145 | 254 | 2.85 MB |
| 11 Jun 2003 | 30 | 275 | 446 | 3.66 MB |
| 12 Jun 2003 | 44 | 313 | 532 | 9.67 MB |
| 13 Jun 2003 | 38 | 544 | 734 | 14.28 MB |
| 14 Jun 2003 | 17 | 75 | 102 | 1.12 MB |
| 15 Jun 2003 | 22 | 93 | 163 | 1.06 MB |
| 16 Jun 2003 | 42 | 318 | 517 | 5.23 MB |
| 17 Jun 2003 | 61 | 451 | 804 | 6.58 MB |
| 18 Jun 2003 | 33 | 346 | 640 | 3.35 MB |
| 19 Jun 2003 | 43 | 280 | 437 | 3.53 MB |
| 20 Jun 2003 | 28 | 193 | 308 | 6.36 MB |
| 21 Jun 2003 | 13 | 55 | 101 | 995.68 KB |
| 22 Jun 2003 | 9 | 32 | 63 | 790.47 KB |
| 23 Jun 2003 | 39 | 254 | 433 | 4.37 MB |
| 24 Jun 2003 | 35 | 259 | 477 | 5.23 MB |
| 25 Jun 2003 | 43 | 481 | 796 | 9.33 MB |
| 26 Jun 2003 | 29 | 163 | 306 | 1.95 MB |
| 27 Jun 2003 | 35 | 147 | 269 | 2.94 MB |
| 28 Jun 2003 | 15 | 109 | 178 | 1.36 MB |
| 29 Jun 2003 | 21 | 120 | 187 | 1.32 MB |
| 30 Jun 2003 | 42 | 247 | 381 | 5.04 MB |
| Average | 32.03 | 215.87 | 363.00 | 3.85 MB |
| Total | 961 | 6476 | 10890 | 115.46 MB |

Figure 3-6: Web Daily Usage for June 2003

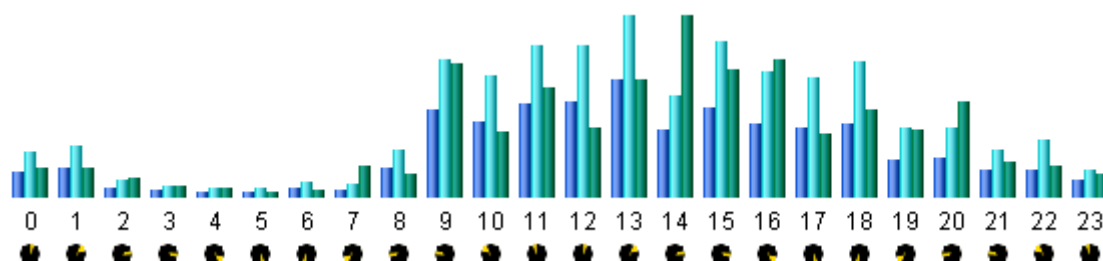


Figure 3-7: Web Hourly Usage for June 2003

4. DETAILED NETWORK AND SERVICES USAGE IN EVENTS/TRIALS

This section is intended to study and analyze the network traffic generated in the following situations:

- **Internal Trials:** Internal Euro6IX trials performed in the context of activity A4.3 will generate traffic within the Euro6IX networks. In some of these trials, the detailed study and analysis of the traffic generated could be interesting. In such cases, particular diagrams and statistics will be shown in this section although they could be included in the general statistics showed in previous sections.
- **Public Events:** After a public event has been performed, the traffic processed by the network during it must be studied and analyzed. The study must be focused in the traffic obtained as a result of this concrete event.

During June 2003 there was no relevant events with the participation of Euro6IX.

5. SUMMARY AND CONCLUSIONS

The contributions of all partners communicating their updates on the services deployed is helping to have a global view of Euro6IX network and to build the future beta-testers users test-bed.

The correct geographical distribution of IPv6 stable services contributes to involve all the partners in a more equal manner in project experiments and demonstrations.

Once the network is stable and there are tools to manage and control it, the next A4.2 should focus on development of attractive final-user services. WP3 will use these services developed in A4.2 to join more users to the IPv6 experience within Euro6IX. The traffic generated by these users will be measured and presented as a result of the project.